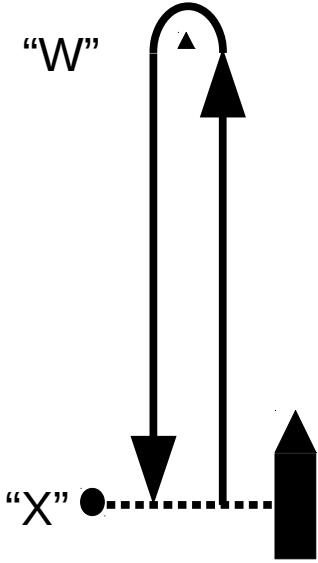
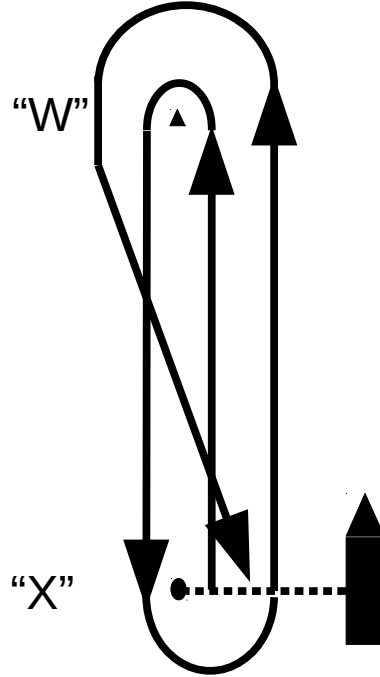


APPENDIX "A" - GRAPHIC COURSE LAYOUT

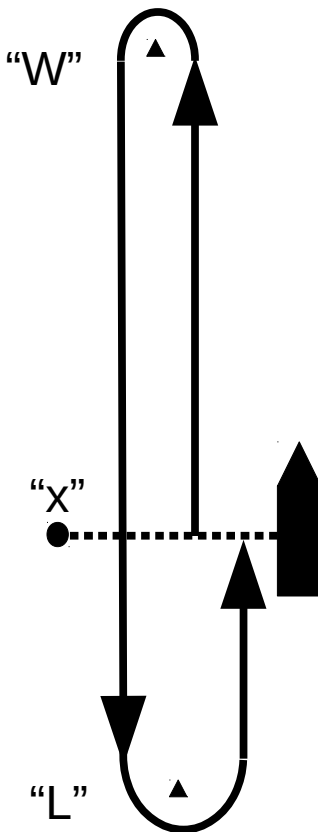
Course "WX"



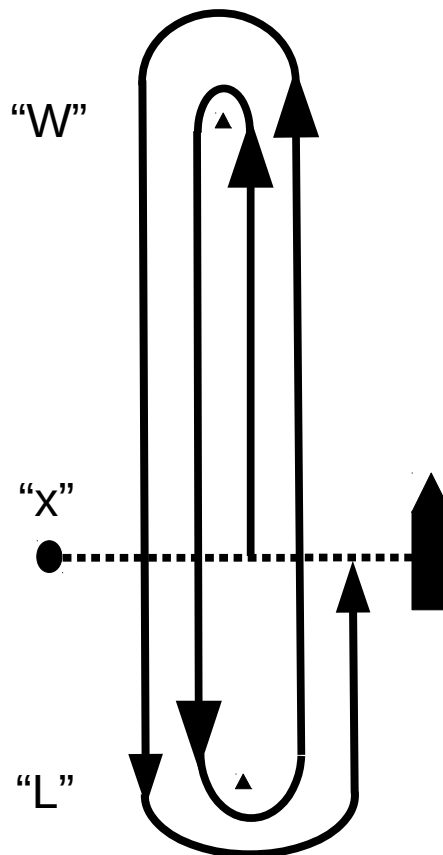
Course "WX2"



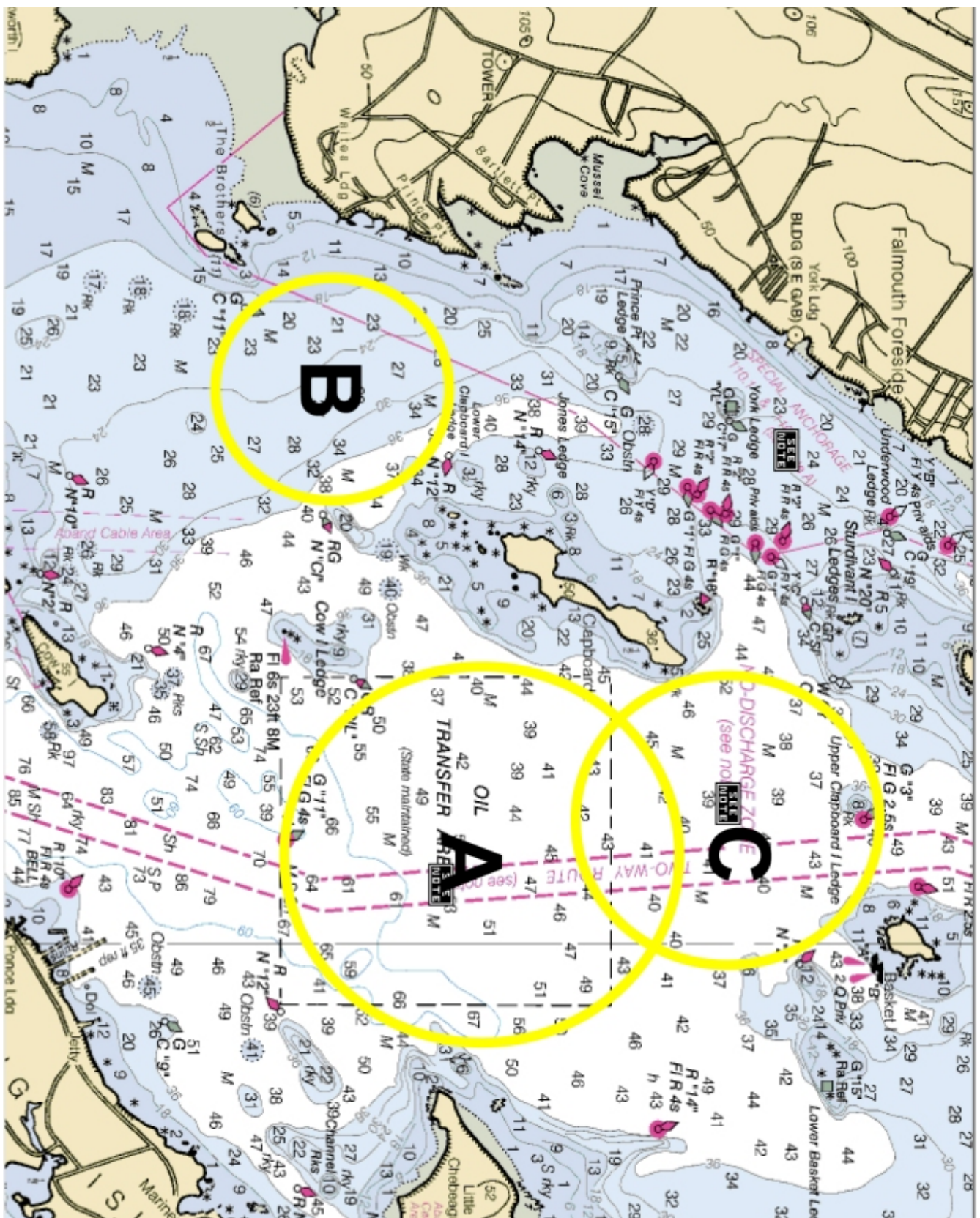
Course "WL"



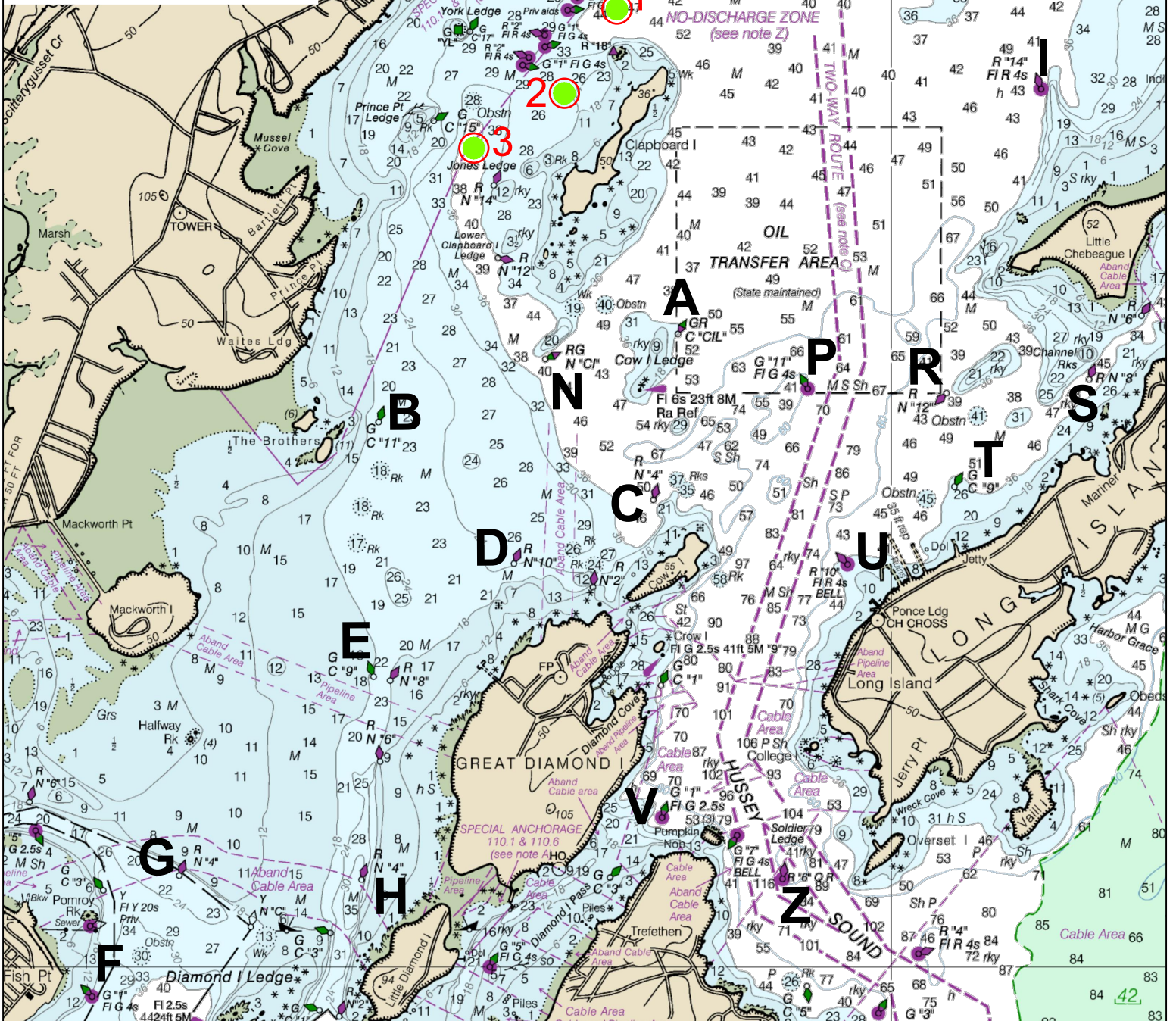
Course "WL2"



APPENDIX "B" – Race area to be communicated to fleet by RC



PORTLAND YACHT CLUB RACING MARKS



A	GR C "CIL"	N	Cow Is. Ledge	M	GR C "SI"	S	Sturdivant Is. Ledge
B	C"11"	E	The Brothers	N	RG N "CI"	W	Cow Is. Ledge
C	N"4"	NW	Cow Is.	P	G"11" FI G 4s	E	Cow Is. Ledge
D	N"10"	NW	Great Diamond Is.	R	N"12"	W	Channel Rocks
E	C"9"	W	Great Diamond Is.	S	N "8"	W	Long Is.
F	G"1" FI G 4s	Fish	Point	T	C"9"	W	Ponce Landing
G	N"4"	NE	Pomroy Rk	U	R"10" FI Bell	W	Pumpkin Knob
H	N"4"	NW	Little Diamond Is.	V	G"1" FIG2.5s	W	Windward Mark
I	R"14" FI R 4s	W	Indian Pt. Cheb. Is.	W	Drop	X	Start/Finish
J	N"2"	SE	Basket Is.	X	Drop	Z	Soldier Ledge, Hussey
K	G"3" FI G 2.5s	SW	Basket Is.	Z	R"6" QR		
L	Drop	Leeward	Mark				

Thursday Night Starting Areas:

Mark selection is by a committee of Race Officers and volunteers from Centerboard and Portland Yacht Clubs. Mark List compiled by T. Tolford, Graphics by J. Cady. Publish date: Spring 2020.